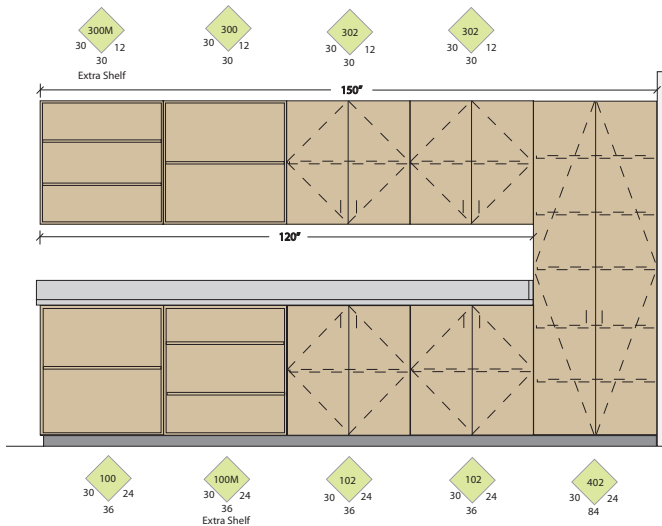


CDS illustrations are provided to assist design professionals and casework users in selecting typical designs. These illustrations are not intended to limit or restrict creativity, or to be all inclusive. CDS files available at: <http://naaws-cds.com>

When utilizing the CDS numbering system, it is not necessary to show casework elevations in your contract documents. However, it is necessary to show a plan view with each CDS number indicated along with the width, height, and depth in inches or millimeters (example: 102-36"x 30"x 18" [102-914 mm x 762 mm x 457 mm]). Cabinet dimensions indicate the nominal outside dimension (floor to top of countertop for height and face of finished wall to face of cabinet door for depth). Manufacturers are permitted a tolerance of plus/minus 1/2" (12.7 mm) in width only.

When designs other than those provided for in the CDS system are desired, they may be indicated by selecting the CDS number most closely representing the desired design, followed by the letter "M" and a description or illustration of the design modification (example: 102M - 2 shelves - 36"x 30"x 18" [102M - 2 shelves - 914 mm x 762 mm x 457 mm] or 102M - no shelves -36"x 30"x 18" [102M - no shelves -914 mm x 762 mm x 457 mm]). It is suggested that a standard number/dimension convention similar to that shown below, is used.

If the CDS numbering system is used in conjunction with cabinet elevations on contract documents, the cabinet elevations shall govern on any conflict between the requirements of the elevation and the CDS number.



CDS cabinets are intended for **FRAMELESS CONSTRUCTION** with integral finished ends and scribes at wall to wall installations not exceeding 1-1/2" (38.1 mm) in width. Hardware and accessories shall be as provided for in these standards.

**A**

CDS are subdivided as follows:

- Base Cabinets w/o Drawers 100 Series
- Base Cabinets w/ Drawers 200 Series
- Wall Hung Cabinets 300 Series
- Tall Storage Cabinets 400 Series
- Tall Wardrobe Cabinets 500 Series
- Library Cabinets 600 Series
- Moveable Cabinets 700 Series

**GENERAL NOTES:**

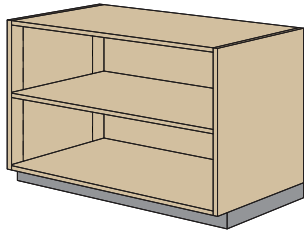
- 100 or 200 Series cabinets may be converted into moveable cabinets by prefixing a "7" to the number. (Example: 7-102-36"x 30"x 18" [7-102-914 mm x 762 mm x 457 mm]).
- Moveable cabinets shall be equipped with adequate approved casters for the intended load capacity.
- CDS #'s 728, 729, 735, 736, 737, 738, and 739 require metal angle reinforced corners.
- Carts and rolling tall storage cabinets with doors, lacking any horizontal and/or vertical stabilizing dividers, require a diaphragm bottom; specifically CDS #'s 702, 712, 716, 722, 743, 744, 746, 747, 750, and 751.
- Wardrobe cabinets (500 Series) with doors require a framed mirror on one door, and cabinets # 533 and 534 require a paper roller/cutter and slide out tilting paper shelves.
- Cart storage cabinets are required to have hardwood side guides, specifically CDS #'s 160, 161, and 162.
- Ceramics drying cabinets are required to have galvanized metal frame shelves with wire mesh, specifically CDS #'s 198 199, and 459.
- File drawers require full extension slides and a file hanging system, specifically CDS #'s 223, 224, 230, 231, 240, 242, 253, 255, 531, 532, and 533.
- Wardrobe cabinets are required to have a shelf, pole, and framed mirror (without pin tray) when closed with hinged doors, specifically CDS #'s 501, 511, 512, 522, 530, 531, 532, and 552.
- Wardrobe cabinets are required to have a roll paper dispenser/cutter, specifically CDS #'s 533 and 534.

**SPECIAL BASE CASEWORK HEIGHTS**, the following are recommended for various school grades, subject to ADA requirements:

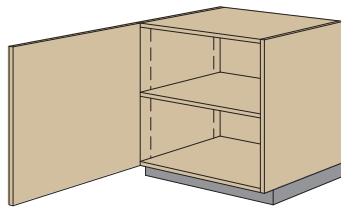
- Kindergarten - Grade 1 24" (610 mm)
- Grades 2 - 3 27" (686 mm)
- Grades 4 - 6 30" (762 mm)
- Grades 7 - 9 33" (838 mm)
- Grades 10 and above 36" (914 mm)

# Cabinet Design Series (CDS)

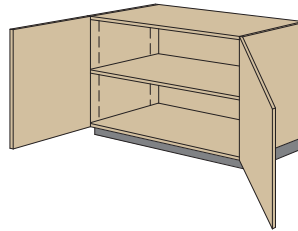
## 100 SERIES - BASE CABINETS without DRAWERS



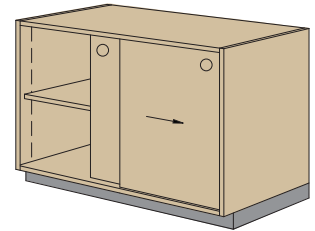
100



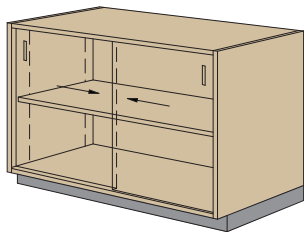
101



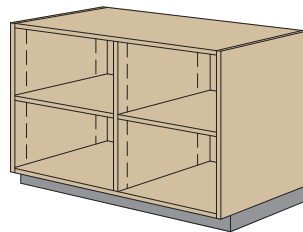
102



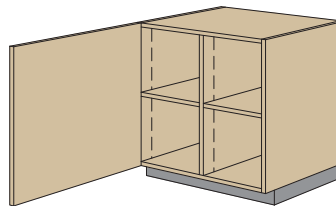
106



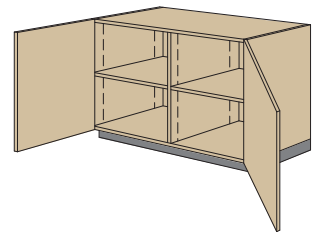
107



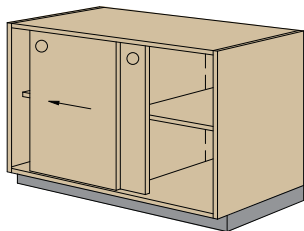
110



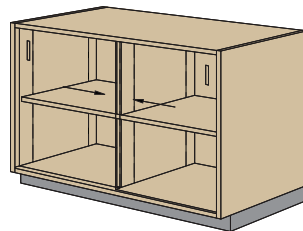
111



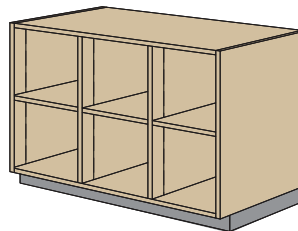
112



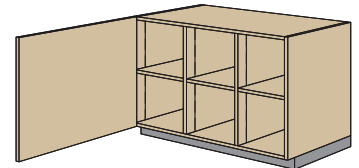
116



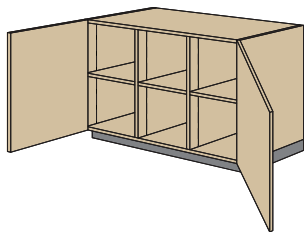
117



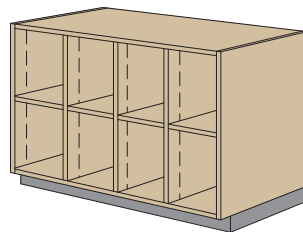
120



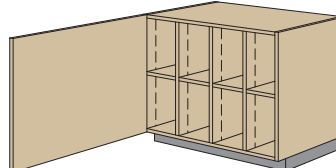
121



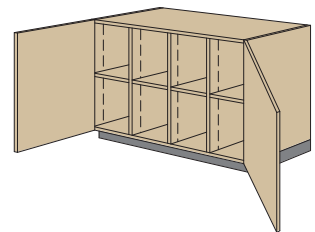
122



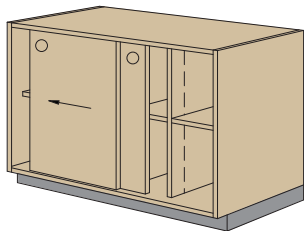
130



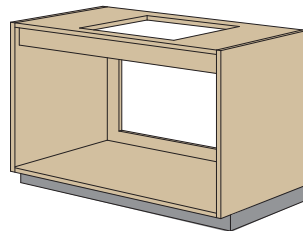
131



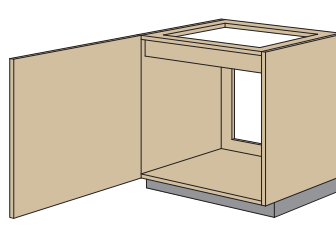
132



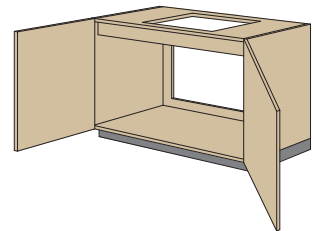
136



140  
Removable Back



141  
Removable Back

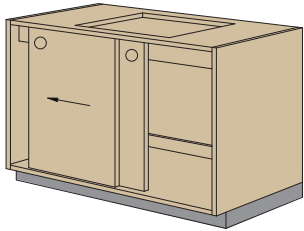


142  
Removable Back

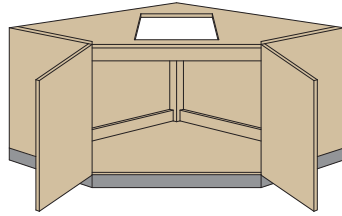
A

AVAILABLE in Autodesk®, Revit®, DWG or DXF file format at [naaws-cds.com](http://naaws-cds.com)

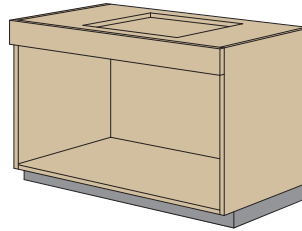
100 SERIES - BASE CABINETS without DRAWERS (continued)



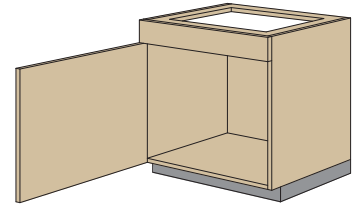
146  
Removable Back



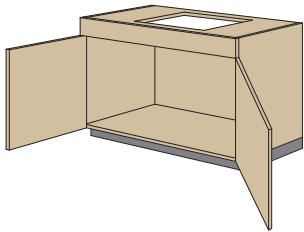
148  
Removable Back



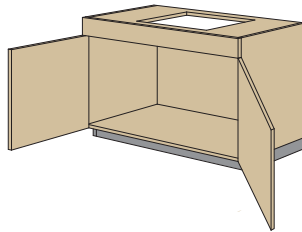
150



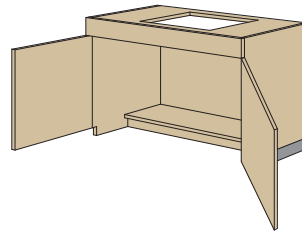
151



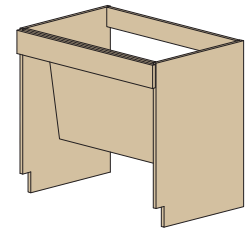
152



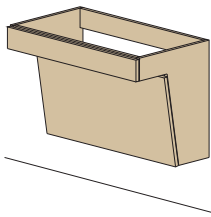
153  
Removable Base/Toe



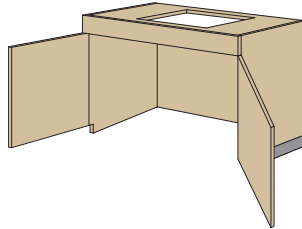
154



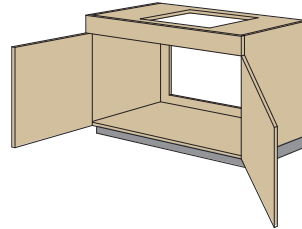
154 B



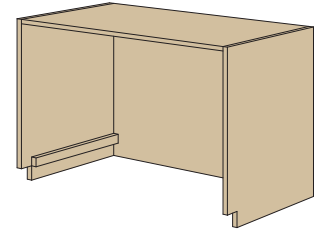
154 C



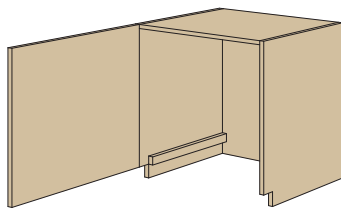
155  
Removable Back



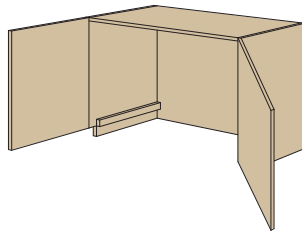
156  
Cart Storage



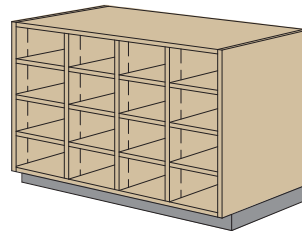
160  
Cart Storage



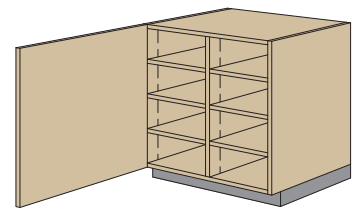
161



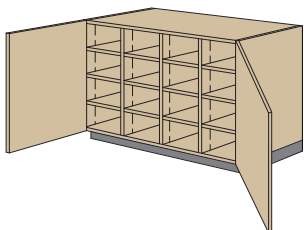
162  
Cart Storage



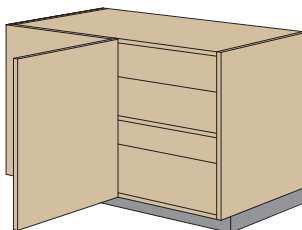
170



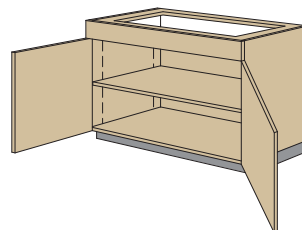
171



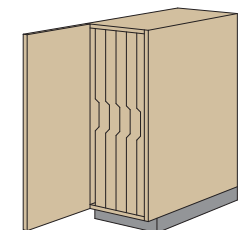
172



176



177



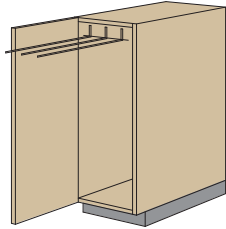
178

AVAILABLE in Autodesk®, Revit®, DWG or DXF file format at [naaws-cds.com](http://naaws-cds.com)

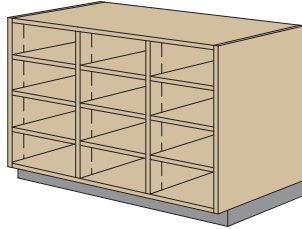
A

Cabinet Design Series (CDS)

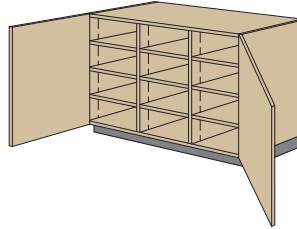
100 SERIES - BASE CABINETS without DRAWERS (continued)



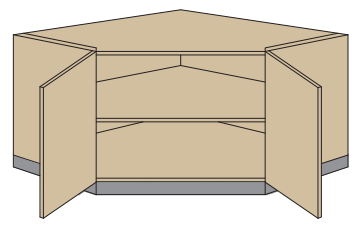
179  
Retractable Towel Rack



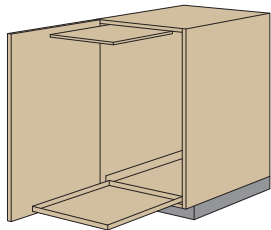
180



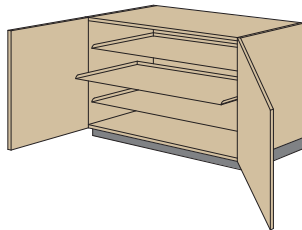
182



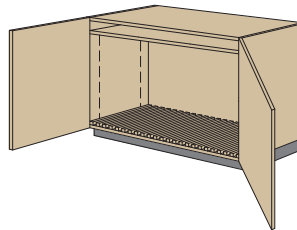
186



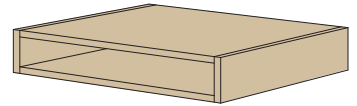
187  
Sliding Tray & Lift Shelf



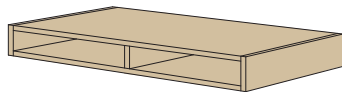
188



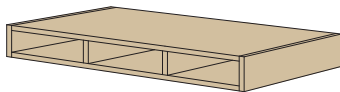
189  
Drawing Board Rack



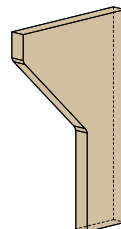
190



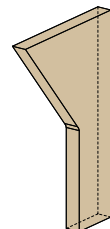
191



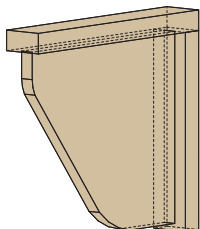
192



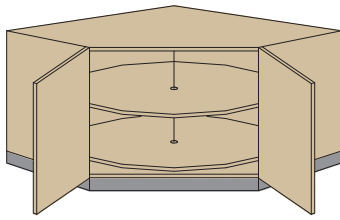
193



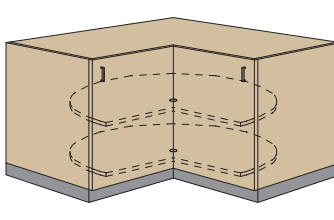
194



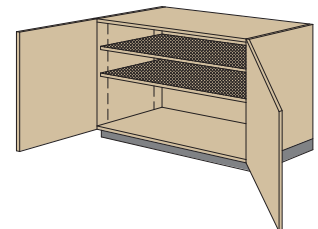
195



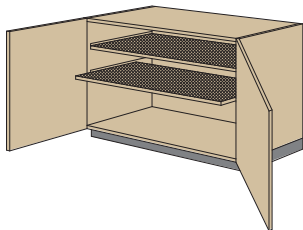
196



197



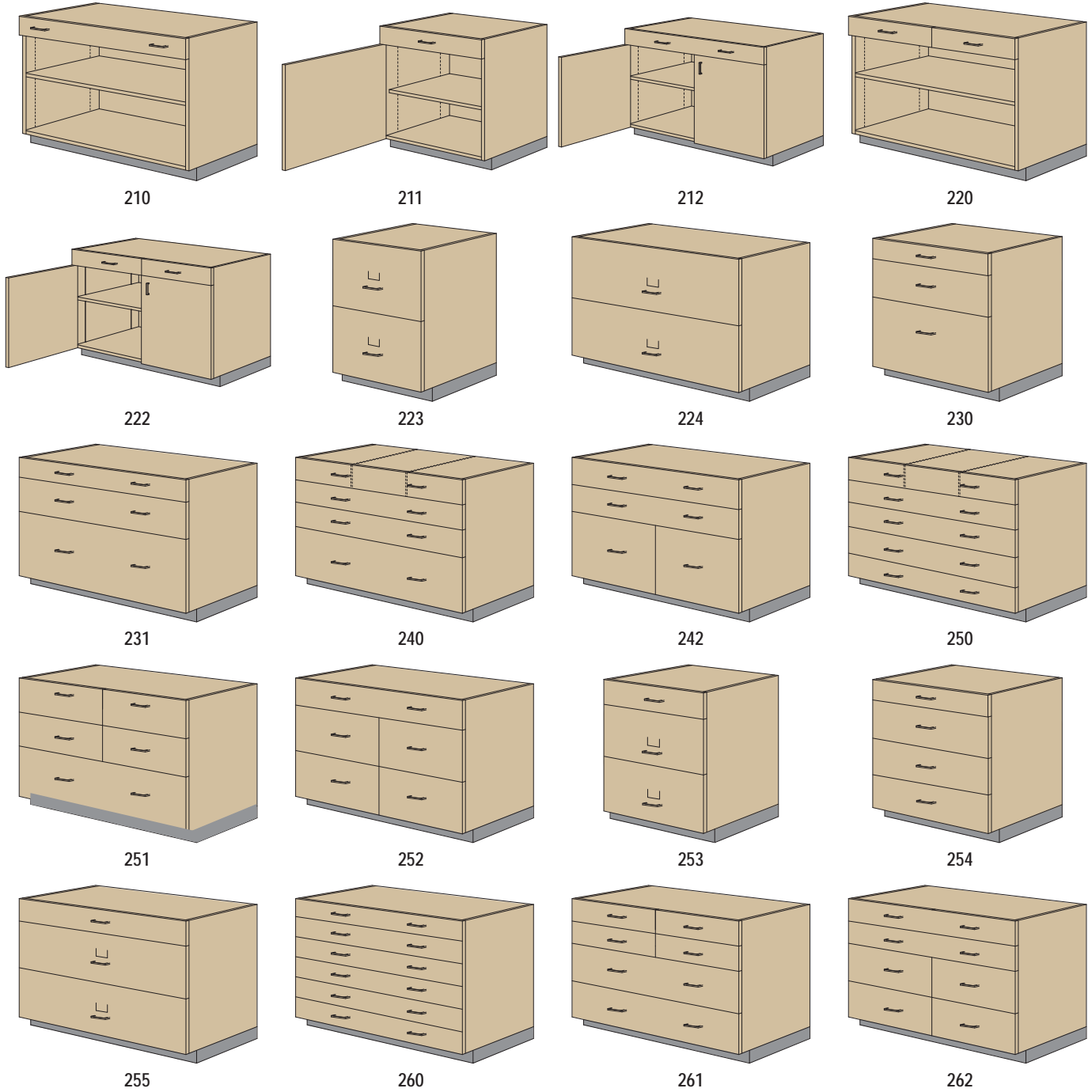
198



199

AVAILABLE in Autodesk®, Revit®, DWG or DXF file format at [naaws-cds.com](http://naaws-cds.com)

200 SERIES - BASE CABINETS with DRAWERS

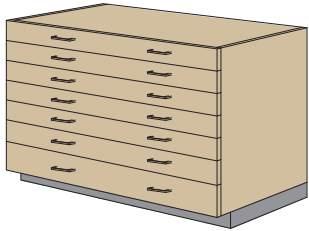


A

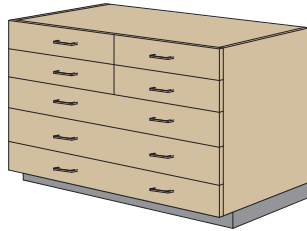
AVAILABLE in Autodesk®, Revit®, DWG or DXF file format at [naaws-cds.com](http://naaws-cds.com)

# Cabinet Design Series (CDS)

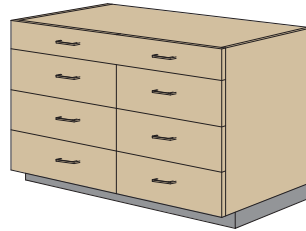
## 200 SERIES - BASE CABINETS with DRAWERS (continued)



270



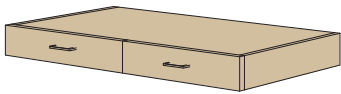
271



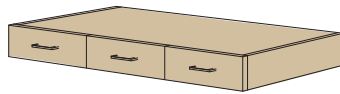
272



290



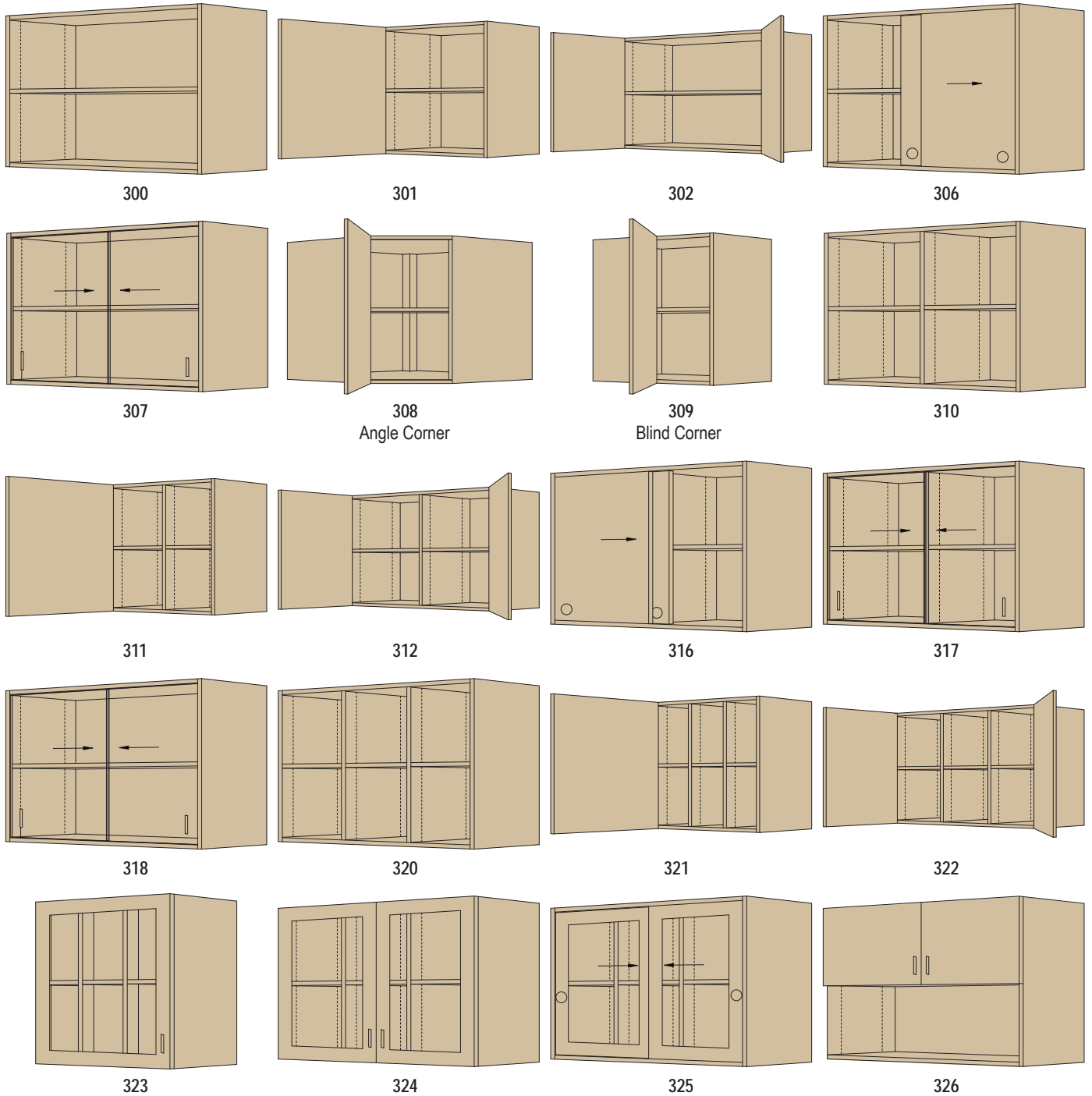
291



292

AVAILABLE in Autodesk®, Revit®, DWG or DXF file format at [naaws-cds.com](http://naaws-cds.com)

300 SERIES - WALL HUNG CABINETS

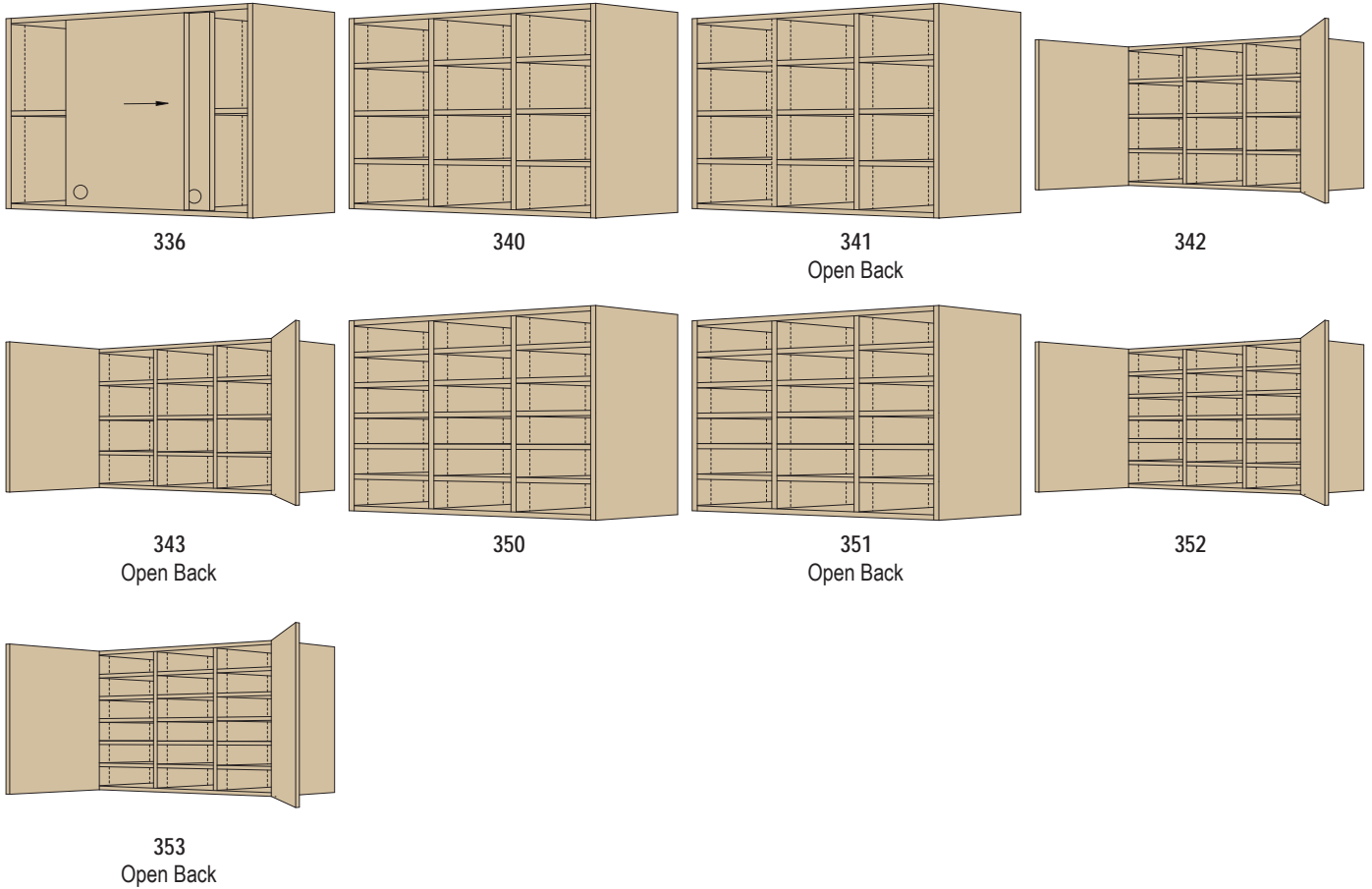


A

AVAILABLE in Autodesk®, Revit®, DWG or DXF file format at [naaws-cds.com](http://naaws-cds.com)

# Cabinet Design Series (CDS)

## 300 SERIES - WALL HUNG CABINETS (continued)

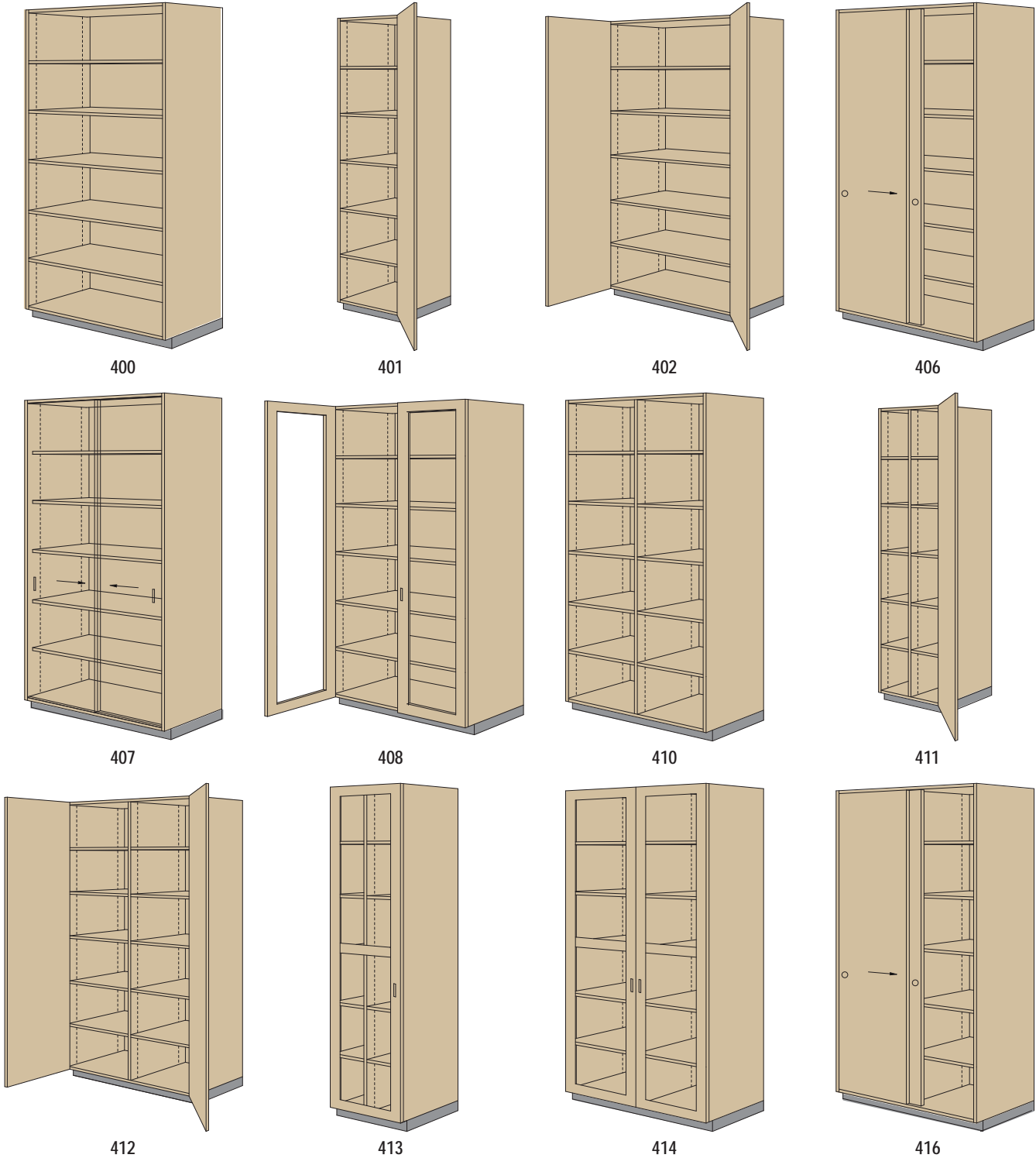


A

AVAILABLE in Autodesk®, Revit®, DWG or DXF file format at [naaws-cds.com](http://naaws-cds.com)



400 SERIES - TALL STORAGE CABINETS

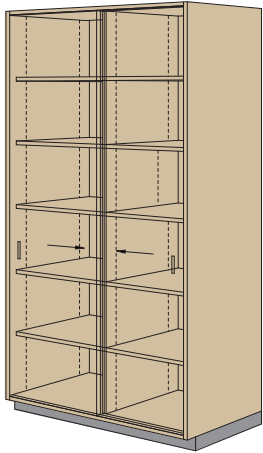


A

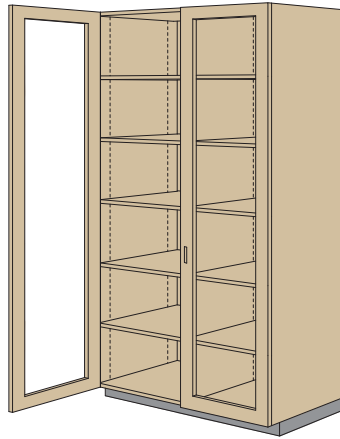
AVAILABLE in Autodesk®, Revit®, DWG or DXF file format at [naaws-cds.com](http://naaws-cds.com)

Cabinet Design Series (CDS)

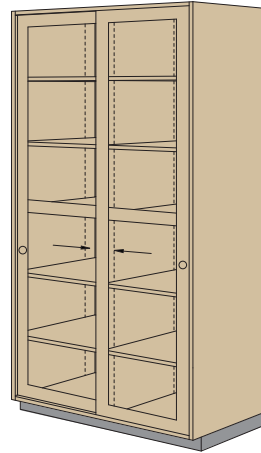
400 SERIES - TALL STORAGE CABINETS (continued)



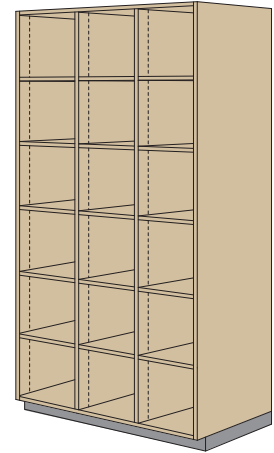
417



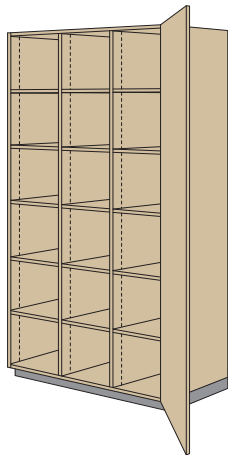
418



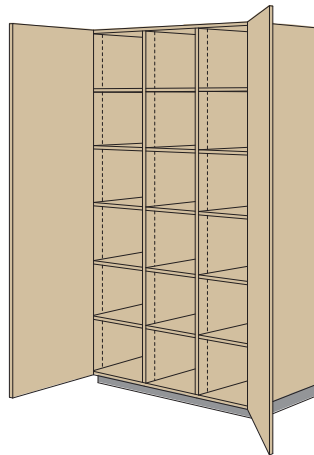
419



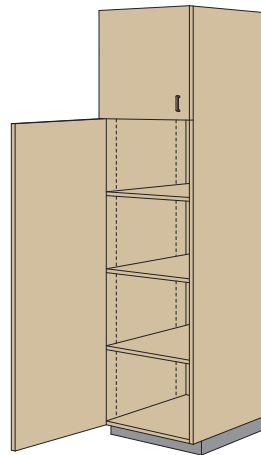
420



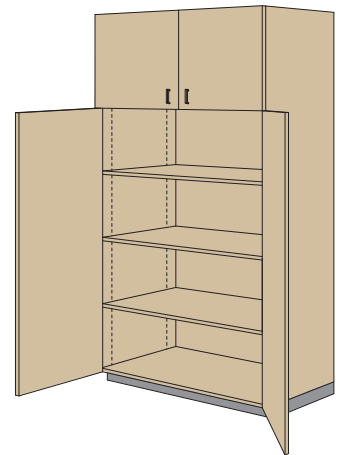
421



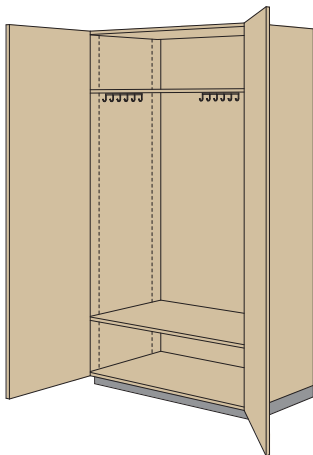
422



423

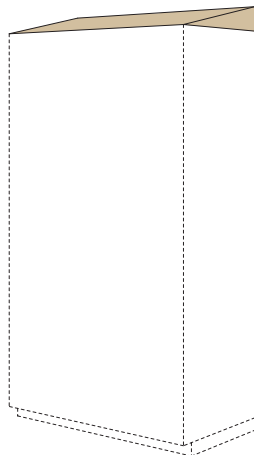


424

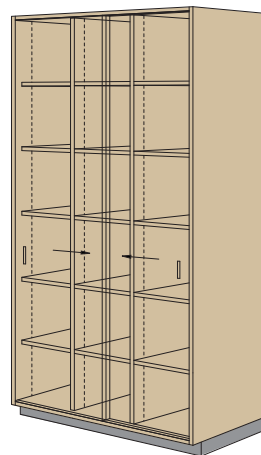


425

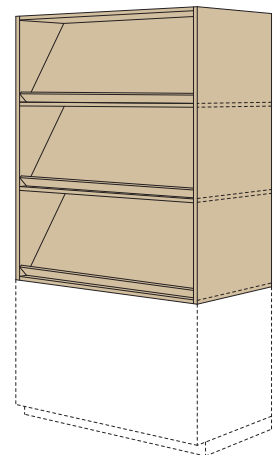
Dust Panel, Integral or Separate



426



427



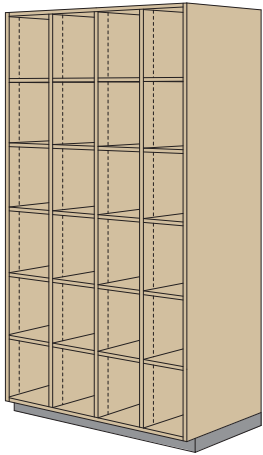
429

Hutch w/ Fixed Shelves

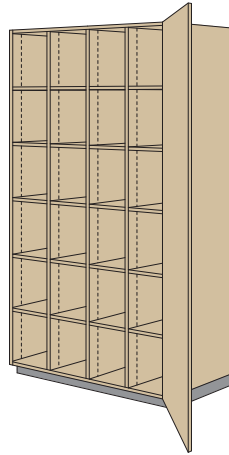
AVAILABLE in Autodesk®, Revit®, DWG or DXF file format at [naaws-cds.com](http://naaws-cds.com)

A

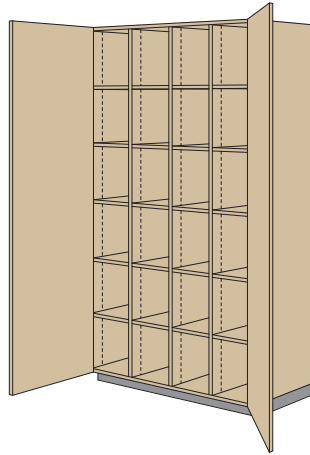
400 SERIES - TALL STORAGE CABINETS (continued)



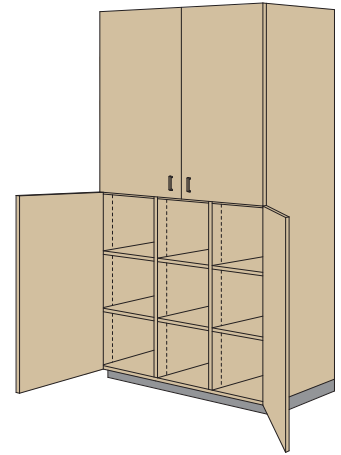
430



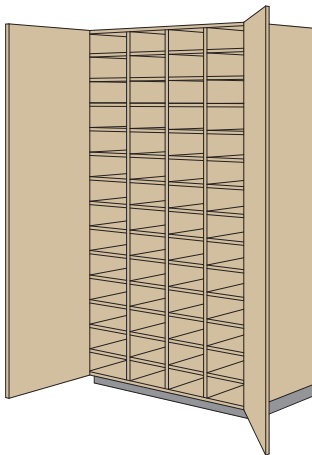
431



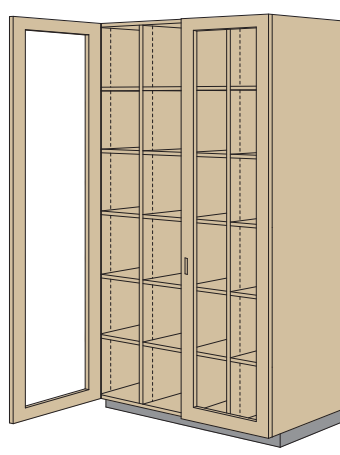
432



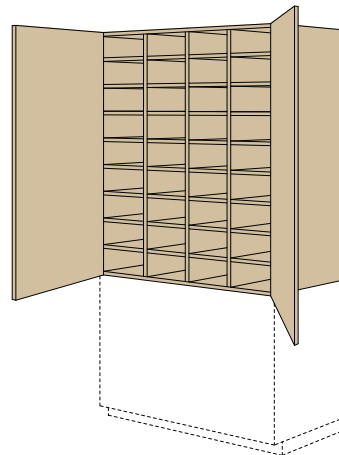
434



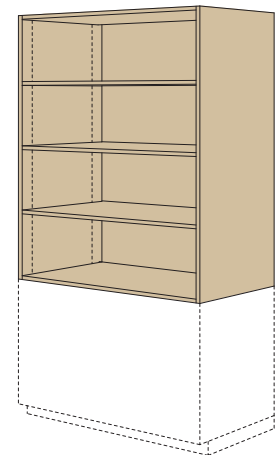
435



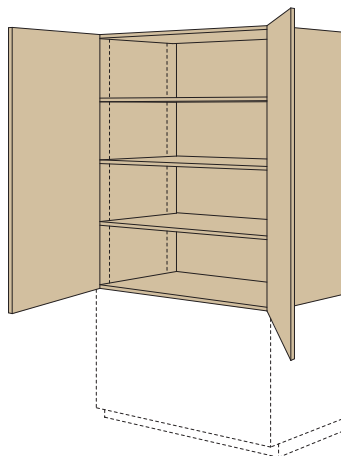
438



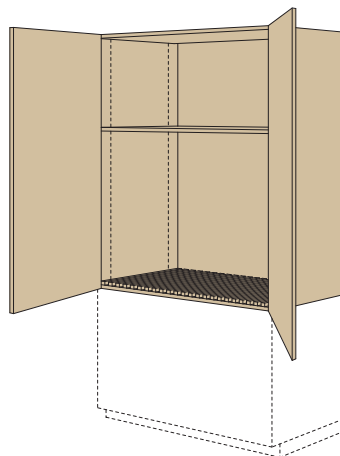
439 Hutch



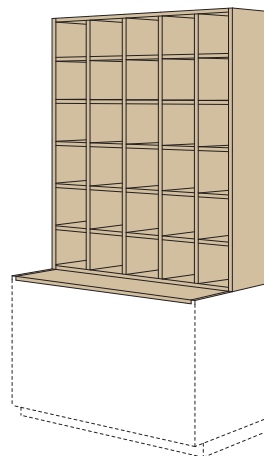
440 Hutch



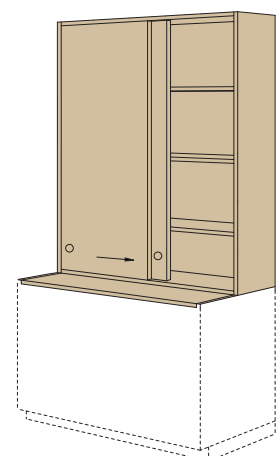
441  
Hutch



443  
Hutch



444  
Hutch



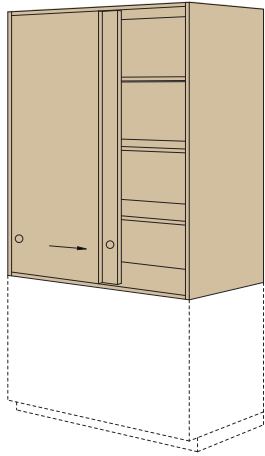
445  
Hutch

A

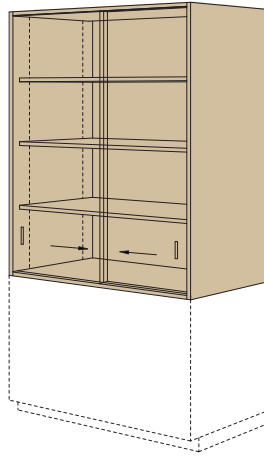
AVAILABLE in Autodesk®, Revit®, DWG or DXF file format at [naaws-cds.com](http://naaws-cds.com)

Cabinet Design Series (CDS)

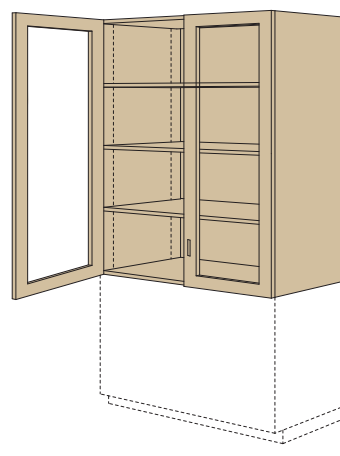
400 SERIES - TALL STORAGE CABINETS (continued)



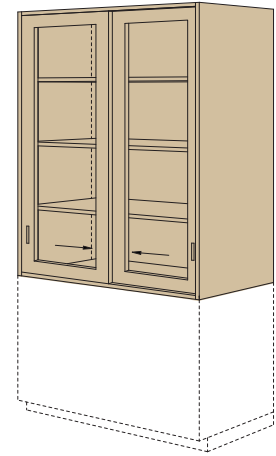
446  
Hutch



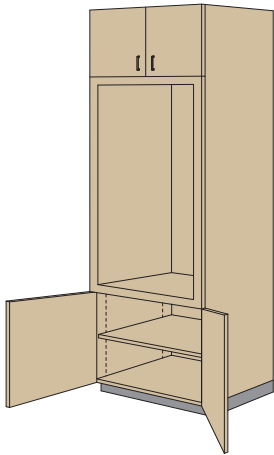
447  
Hutch



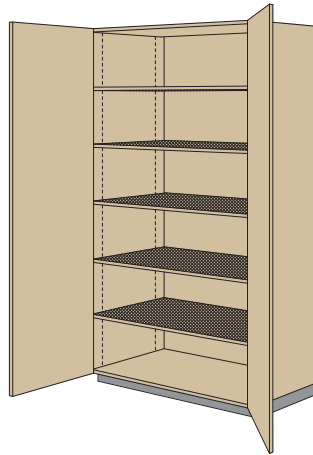
448  
Hutch



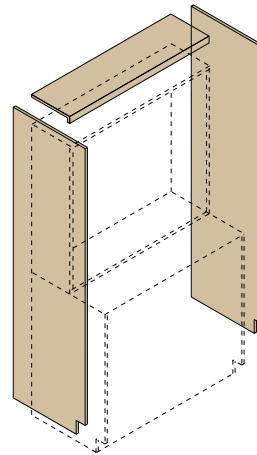
449  
Hutch



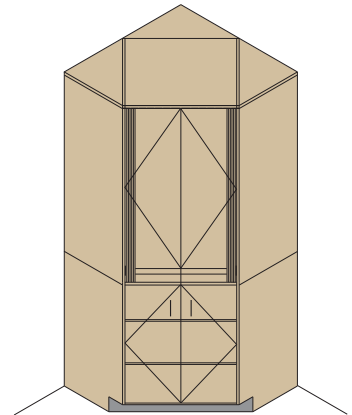
454



459



460

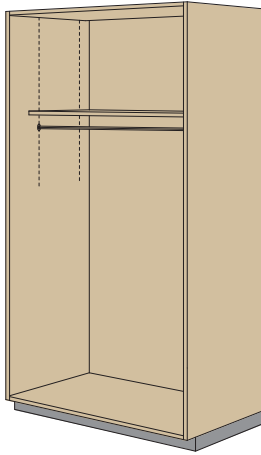


461

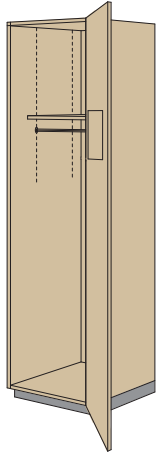
A

AVAILABLE in Autodesk®, Revit®, DWG or DXF file format at [naaws-cds.com](http://naaws-cds.com)

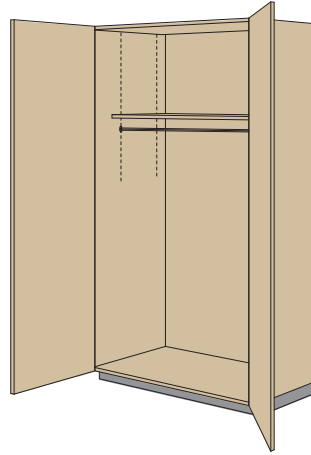
500 SERIES - WARDROBE CABINETS



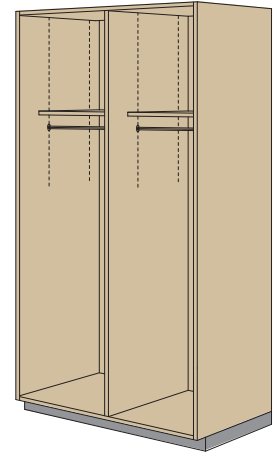
500



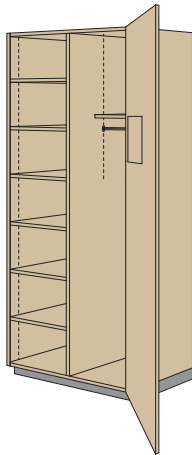
501



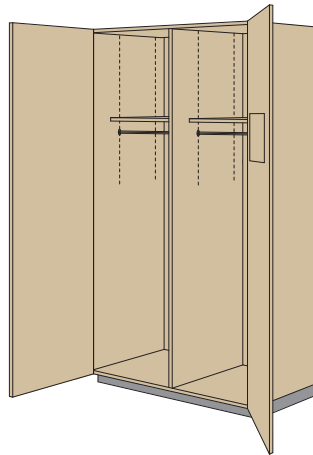
502



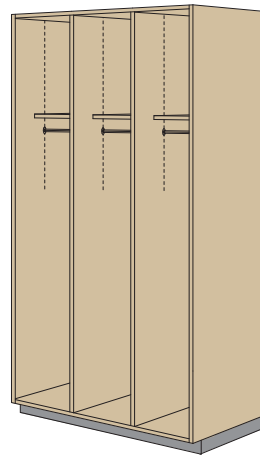
510



511



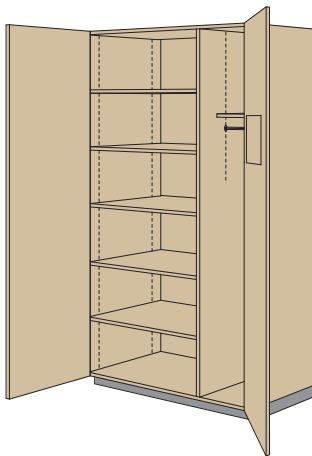
512



520



522



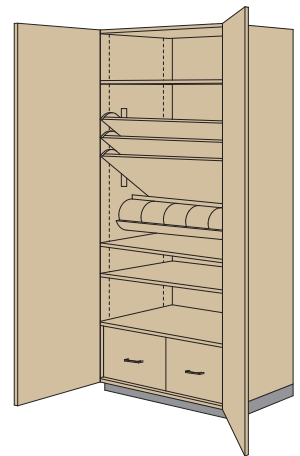
530



531



532



533

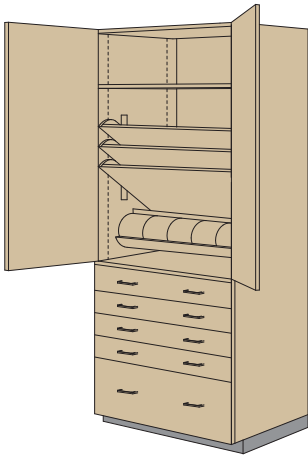
See General Notes

AVAILABLE in Autodesk®, Revit®, DWG or DXF file format at [naaws-cds.com](http://naaws-cds.com)

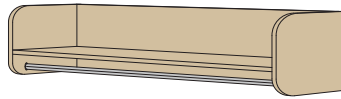
A

# Cabinet Design Series (CDS)

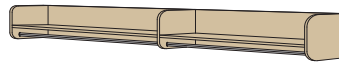
## 500 SERIES - WARDROBE CABINETS (continued)



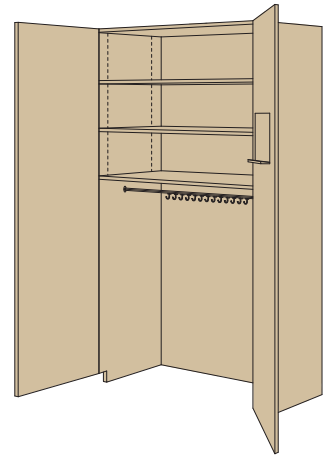
534  
See General Notes



540



541

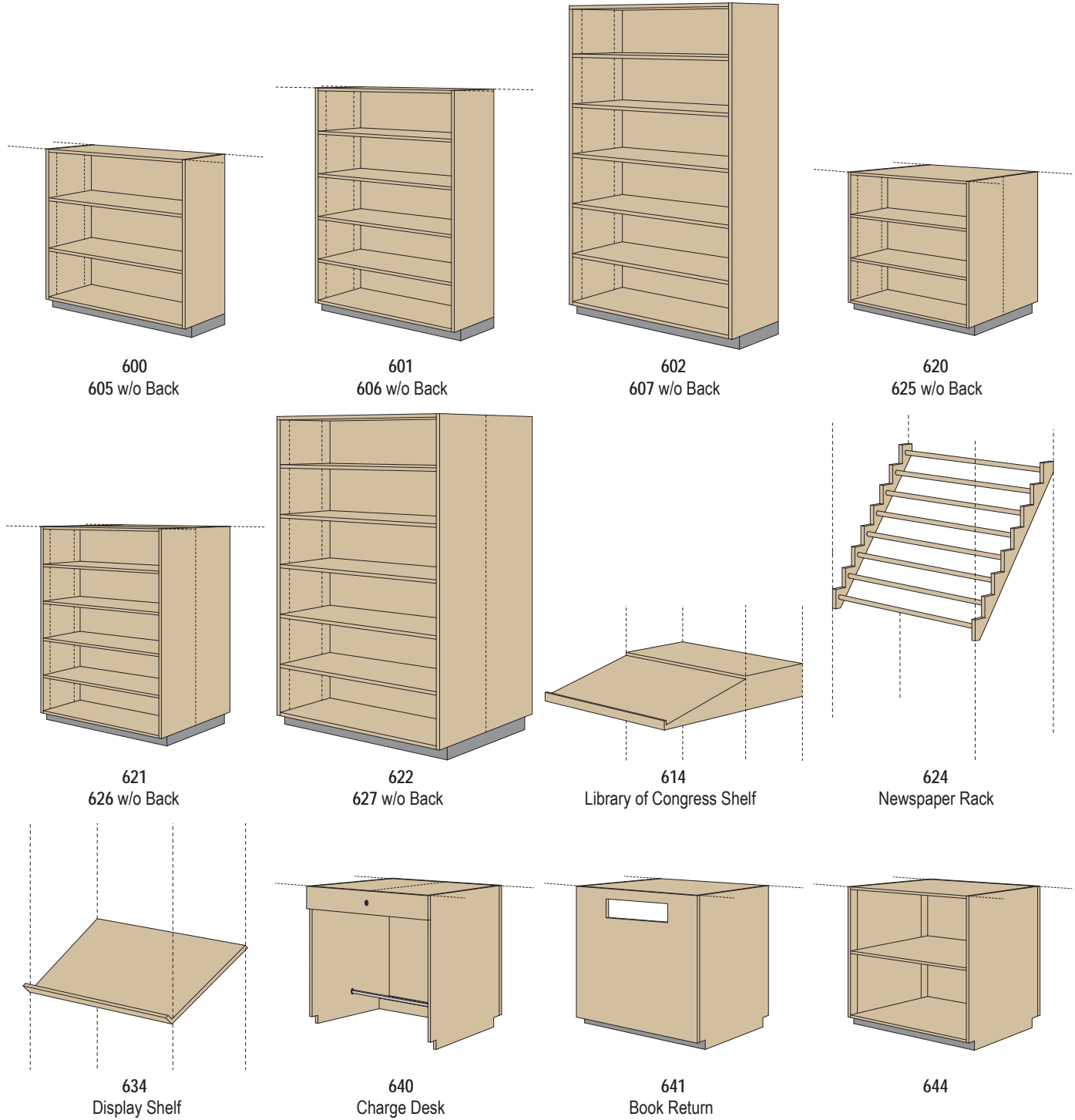


552  
Pole w/ Wall Hooks

A

AVAILABLE in Autodesk®, Revit®, DWG or DXF file format at [naaws-cds.com](http://naaws-cds.com)

600 SERIES - LIBRARY CABINETS

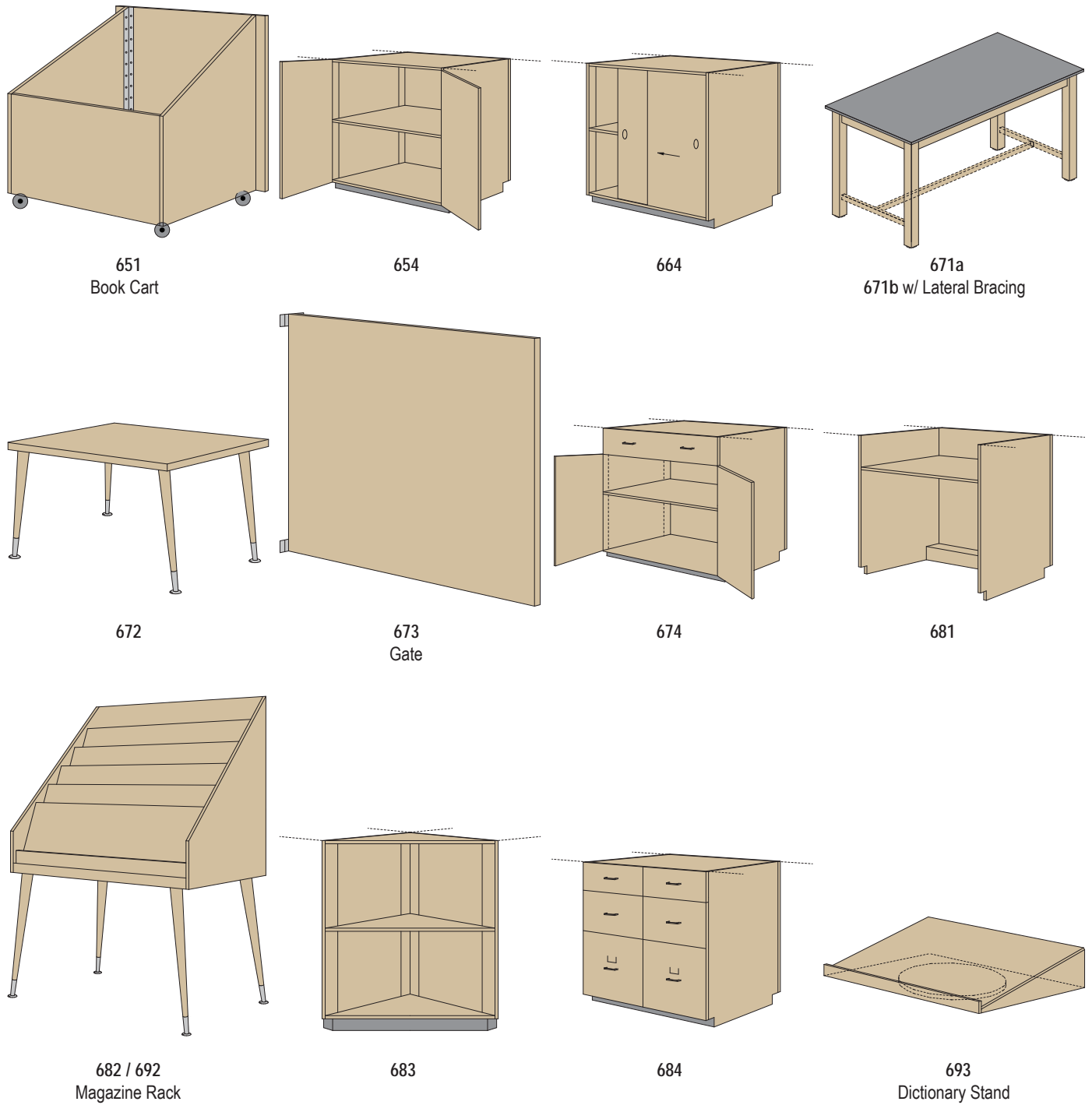


A

AVAILABLE in Autodesk®, Revit®, DWG or DXF file format at [naaws-cds.com](http://naaws-cds.com)

Cabinet Design Series (CDS)

600 SERIES - LIBRARY CABINETS (continued)

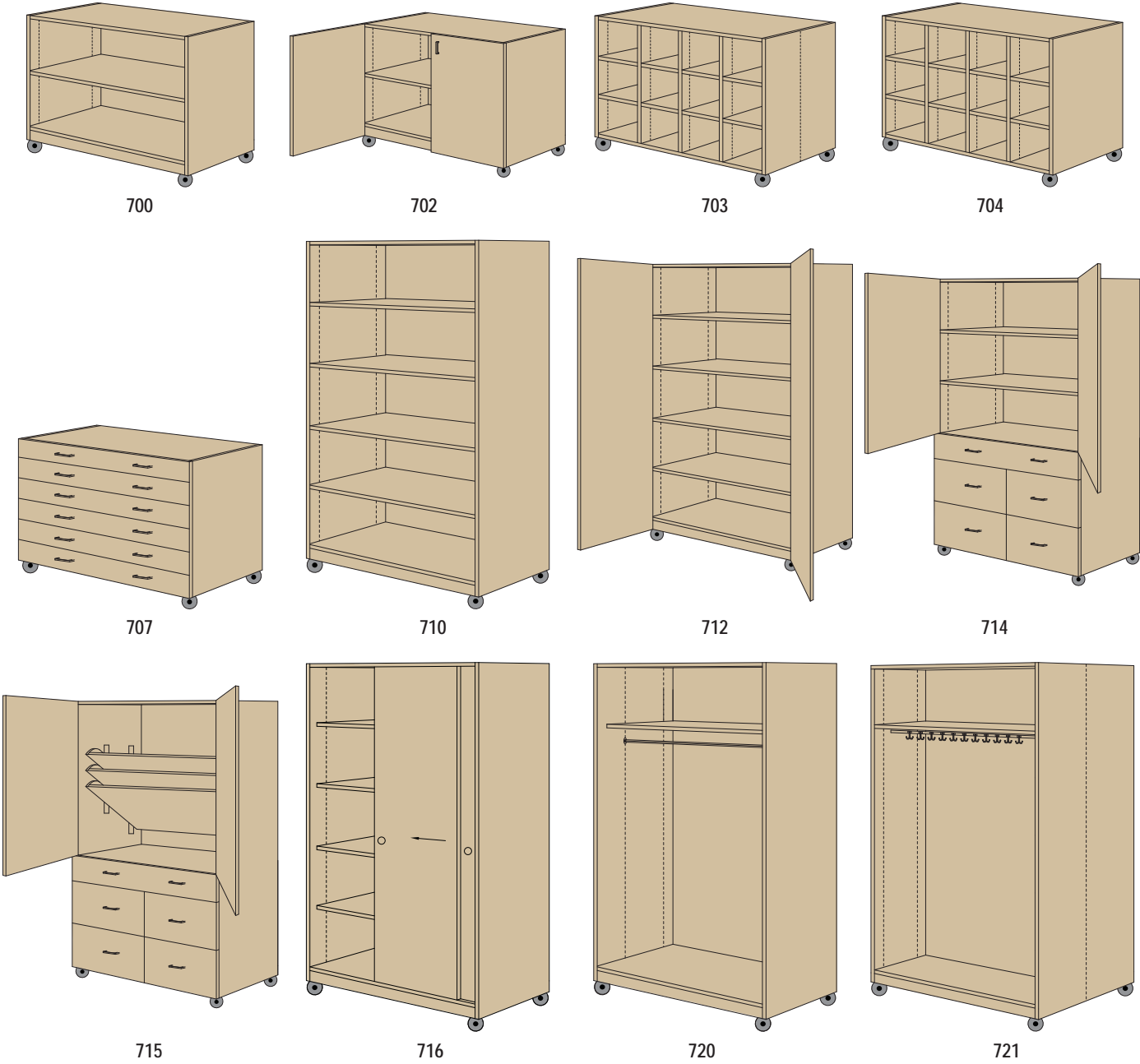


A

AVAILABLE in Autodesk®, Revit®, DWG or DXF file format at [naaws-cds.com](http://naaws-cds.com)



700 SERIES - MOVEABLE CABINETS



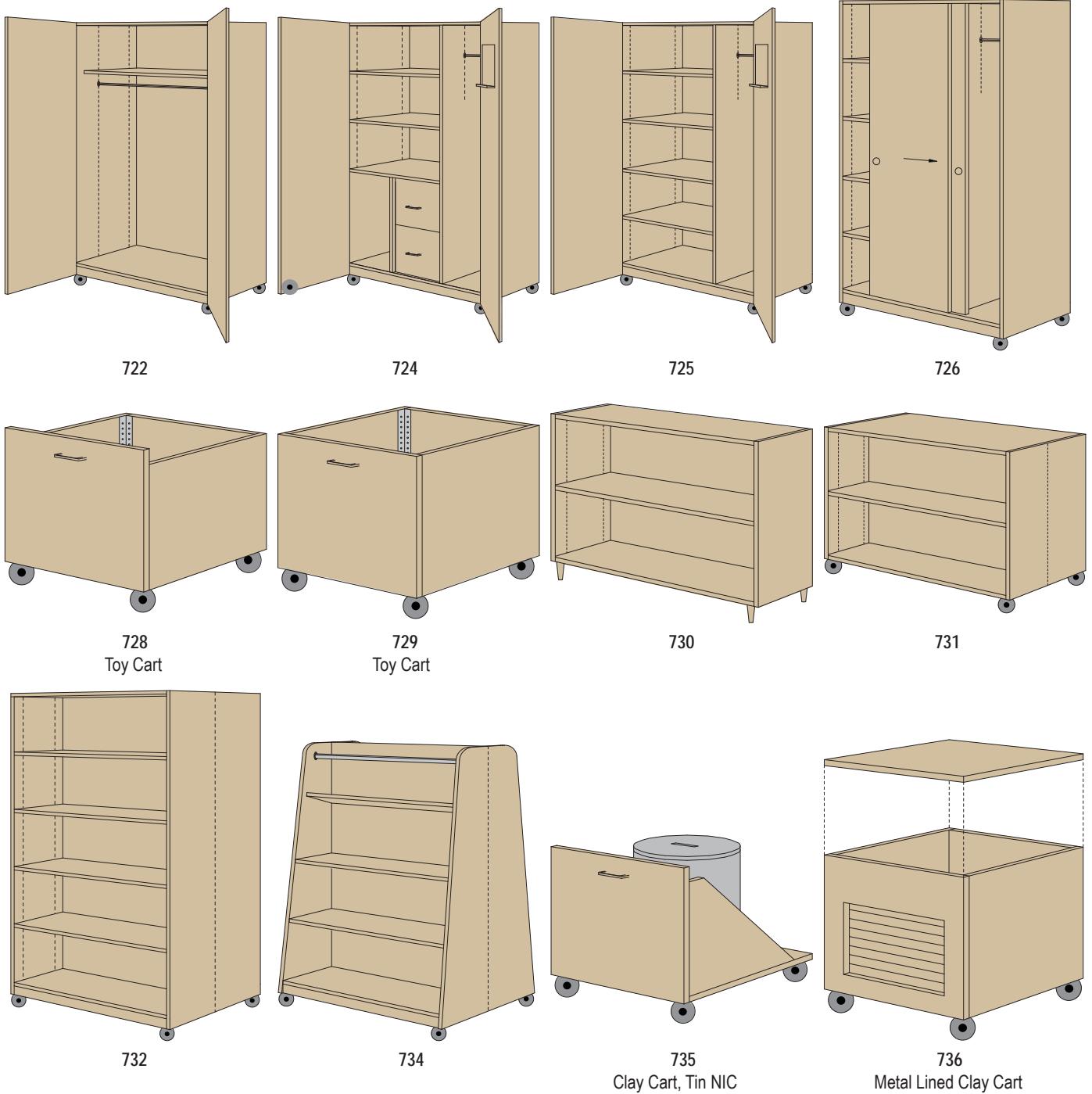
A

715 Slide Out Tilting Paper Shelves

AVAILABLE in Autodesk®, Revit®, DWG or DXF file format at [naaws-cds.com](http://naaws-cds.com)

Cabinet Design Series (CDS)

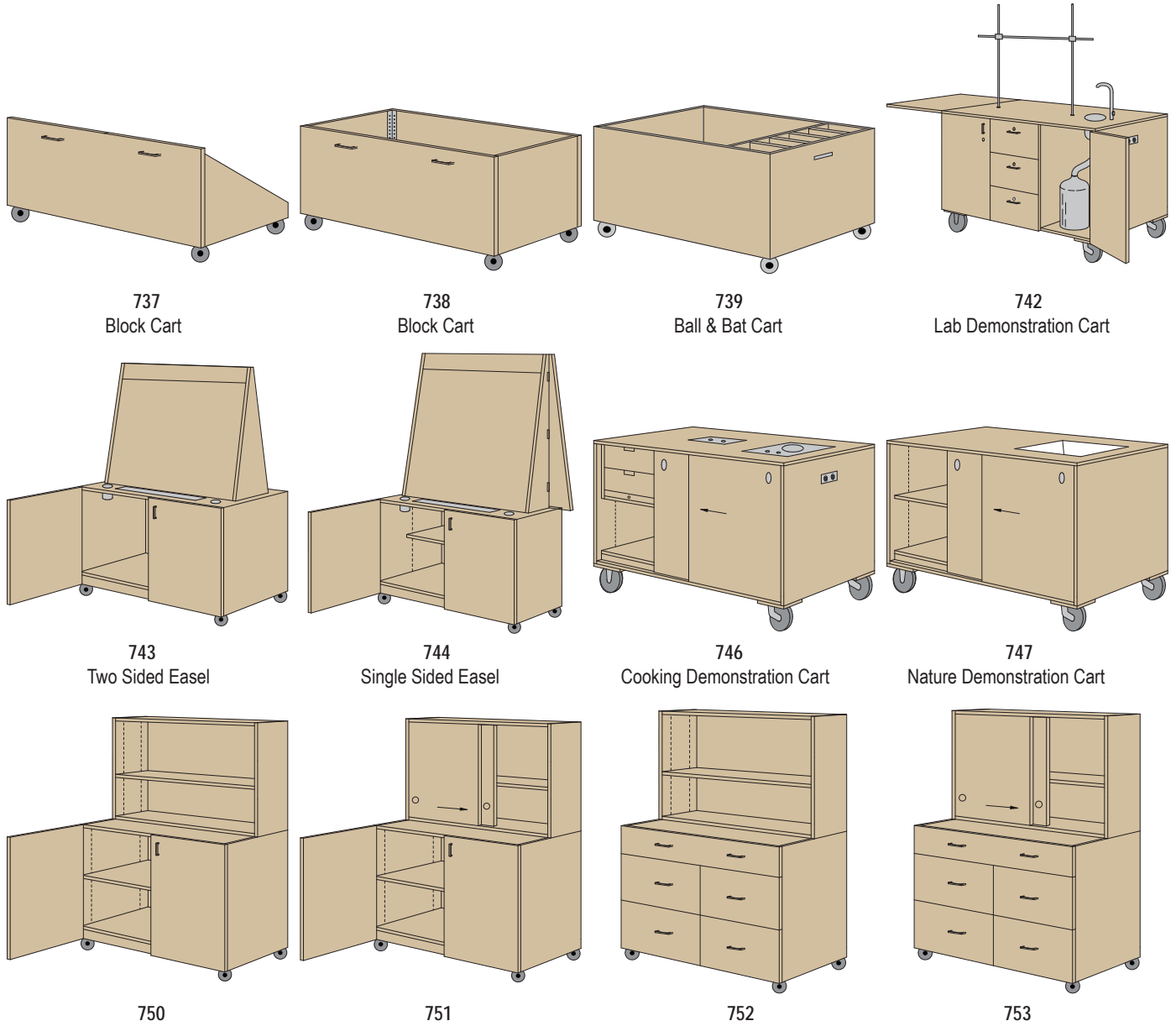
700 SERIES - MOVEABLE CABINETS (continued)



A

AVAILABLE in Autodesk®, Revit®, DWG or DXF file format at [naaws-cds.com](http://naaws-cds.com)

700 SERIES - MOVEABLE CABINETS (continued)



A

AVAILABLE in Autodesk®, Revit®, DWG or DXF file format at [naaws-cds.com](http://naaws-cds.com)

# Cabinet Design Series (CDS)

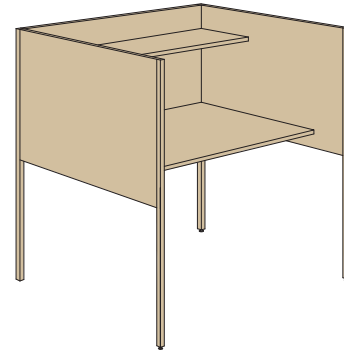
## 700 SERIES - MOVEABLE CABINETS (continued)



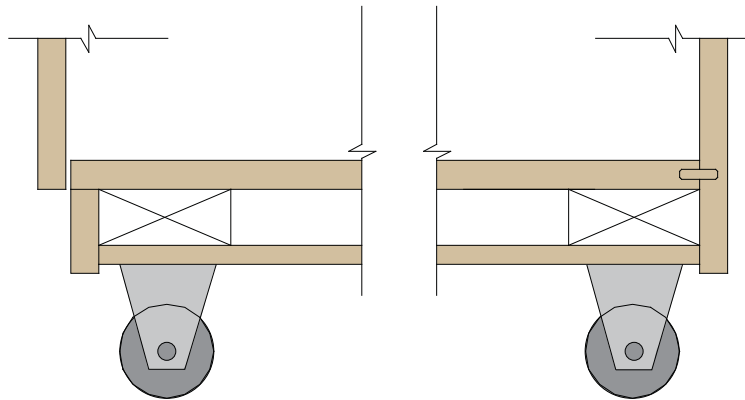
754



755



760  
Study Carrel



Typical Diaphragm Bottom Detail

AVAILABLE in Autodesk®, Revit®, DWG or DXF file format at [naaws-cds.com](http://naaws-cds.com)